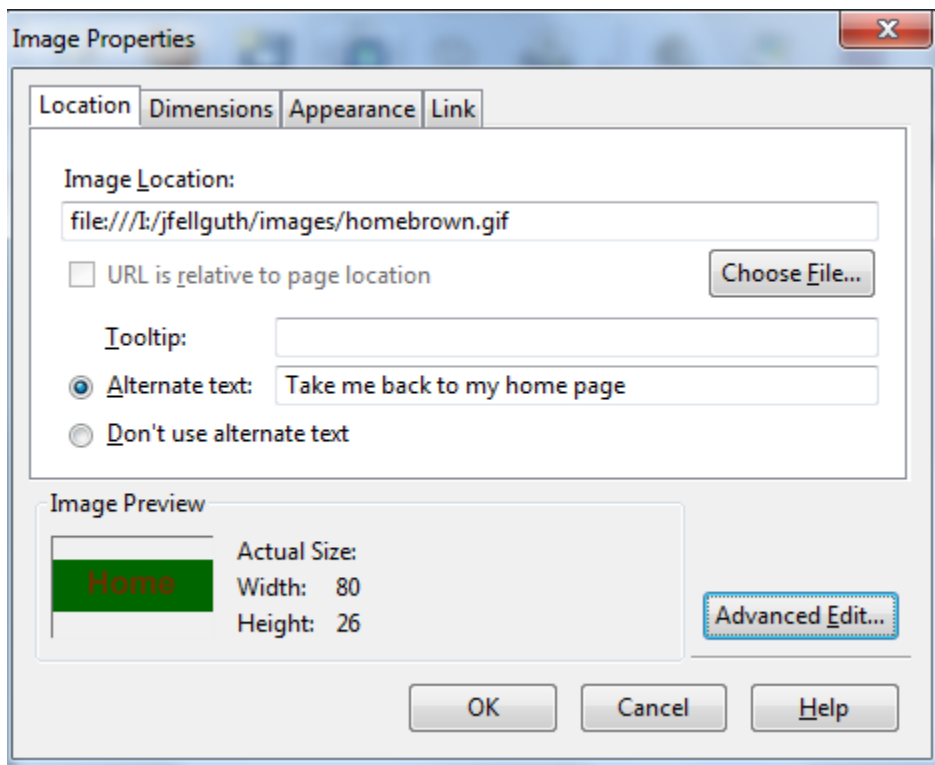
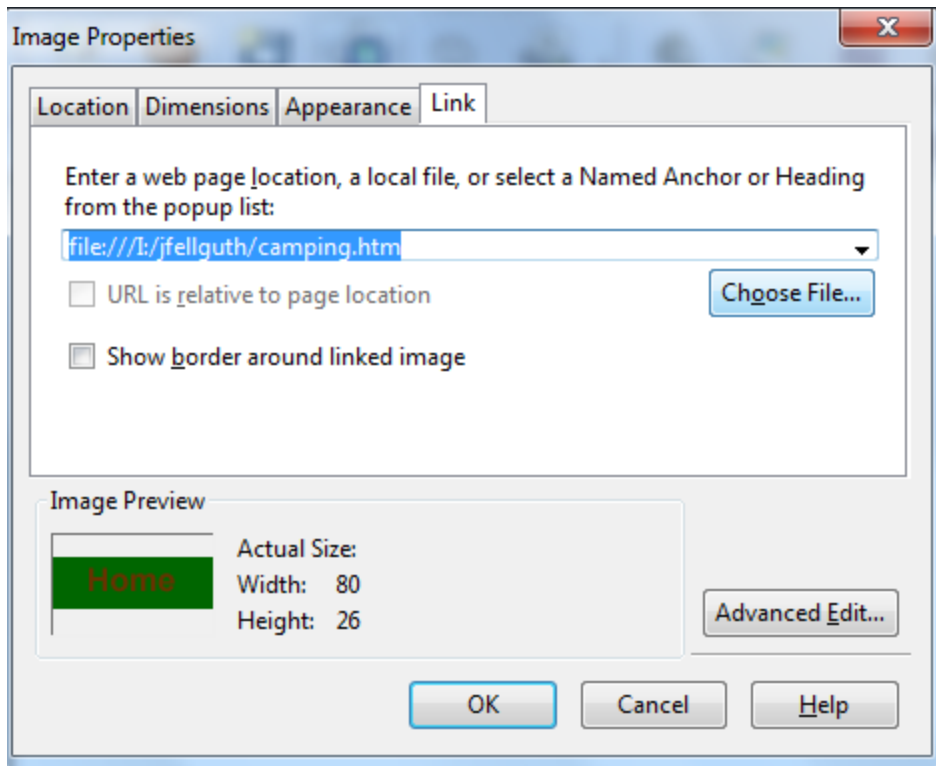


How to Insert a Clickable Image Using SeaMonkey

To insert an image that can be clicked to take you to another web page or web site, start by creating your page within the SeaMonkey Composer. Place your cursor at the location on your web page where you want the linked image to appear. Click **Insert, Image**. Use **Choose File** to select your image, type in the alternate text (this will appear as a text description of the image or what the image is intended to do for those whose browsers have been configured to not display images). Here is an example:



Click the **Link** tab, enter the name of the file or URL to which you wish to link.



Click OK. Your page now contains a clickable image that will take the viewer to the file or web site you indicated when you filled in the Link information as shown above.